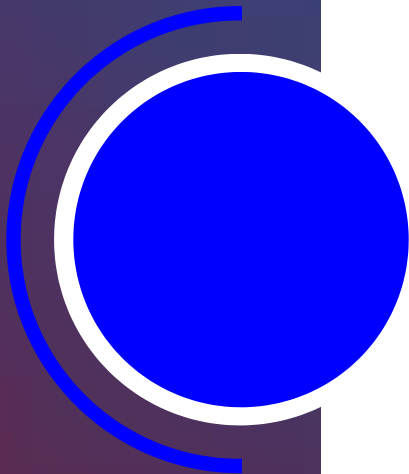


**Templin**<sup>TM</sup>  
*preserving life*

**Blood Bank Refrigerators**

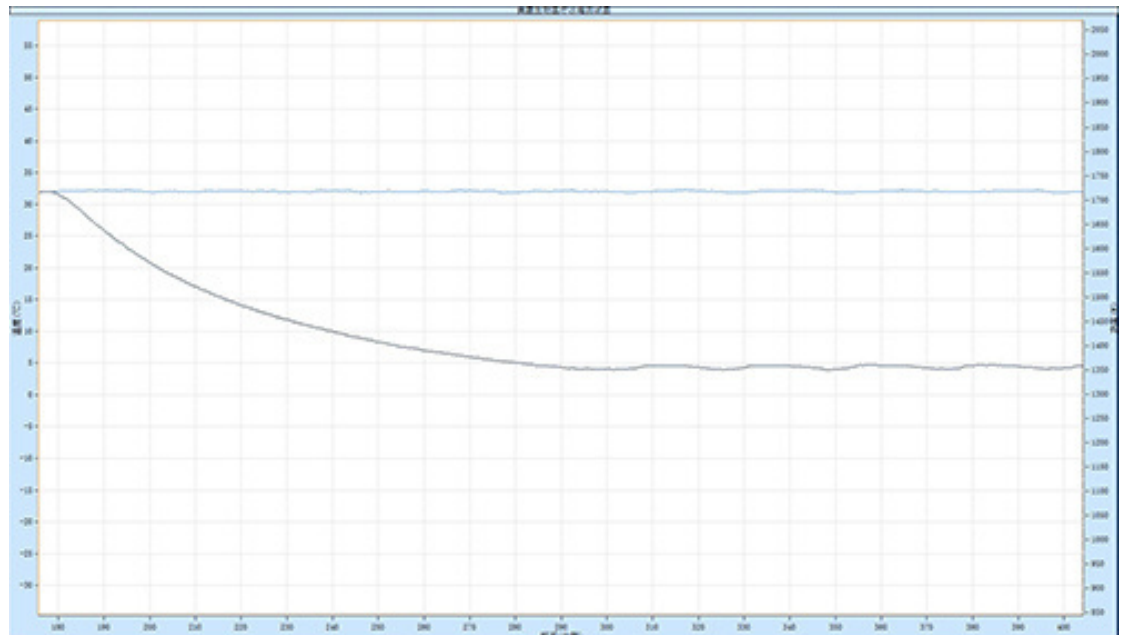


**4°C High Performance Blood Bank Refrigerator TBRR-268**

## ● Features

- 1-inch high-brightness digital temperature display allowing temperature display reach 0.1°C.
- Lockable door with key to prevent from opening door without authorizing.
- Aluminum fined copper tube and high-effective air-cooled type evaporator.
- Audible and visible alarm system with high/low temperature alarm, power failure alarm, door ajar alarm, power failure alarm, etc.
- 2-layer glass window door with auto defrost features ensuring temperature uniformity.
- Non-CFC rigid polyurethane insulation to avoid redundant heating.

## ● Mappings



# ● Structure



- Return air design for precise temperature control
- High-efficiency refrigeration for security of blood
- 5 dip-coating shelves with label strips
- 15 dip-coating blood bag frames
- Constant temperature under intelligent control.

## Scope of Application

Blood bank storage refrigerator Suitable for storage of whole blood, blood platelets, red blood cells, biological products, vaccines, drugs, reagents, etc; Suitable for use in blood banks, hospitals, research institutions, disease prevention & control centers, etc.

## Overview

°C

4 Blood Bank Refrigerator XC-268L is a reliable blood storage refrigerator for safeguarding security of whole blood, blood plasmas, blood compartments and blood samples. The intelligent constant temperature control ensures the temperature control precision within 2~6°C inside the cabinet, which can perfectly promise the temperature uniformity. The blood storage refrigerator equipped with auto-defrost glass door ensures safe medical or lab material storage. What makes this blood refrigerator outstanding is that it meets or exceeds the AABB and CDC regulations for blood storage. To give you high-efficiency capacity storage, this blood bank refrigerator is designed with 5 dip-coating shelves and 15 stainless steel baskets with 150 bags 450ml loading capacity.

### Constant Temperature under Intelligent Control

- Return air duct design, ensuring a temperature control precision of  $\pm 1^{\circ}\text{C}$  inside the cabinet;
- High-precision computerized temperature control system, built-in sensors for upper/lower zone temperature, ambient temperature, evaporator temperature, and operation control, ensuring safe and stable operation.

## Security System

Perfect audible and visual alarm system comes with alarm functions for high temperature, low temperature, sensor failure, door ajar, and power failure ,etc;

High-efficiency Refrigeration ·Advanced air cooling design, precision temperature control, safeguarding security of blood ·Stainless steel inner container, copper tube evaporator, powerful refrigeration.

## Refrigeration System

- ·Equipped with brand high-efficient compressor, EBM fan motor, performing efficient energy and quiet;
- ·High-precision computerized temperature control system, built-in sensors for upper/lower zone temperature, ambient temperature, evaporator temperature, and operation control, ensuring safe and stable operation.

## Automatic Defrost

- ·Return air duct design, ensuring a temperature control precision of  $\pm 1^{\circ}\text{C}$  inside the cabinet;
- ·Equipped with automatic defrost function, force defrost.

## Humanized Design

- ·Equipped with 5 dip-coating shelves with label strips;
- ·20 dip-coating blood bag frames (optional stainless steel frame), can hold 220 blood bags in 450ml for each.

<b>Model</b>	<b>TBBR-268</b>
Capacity(L)	268
Internal size(W*D*H)mm	530*490*1145
External size(W*D*H)mm	640*760*1856
Package size(W*D*H)mm	700*760*2013
NW/GW(Kgs)	125/161
<b>Performance</b>	
Temperature range	2~6°C
Ambient temperature	16~32°C
Climate class	N
Controller	Microprocessor
Display	Digital display
<b>Refrigeration</b>	
Compressor	1pc
Cooling method	Air cooling
Defrost mode	Automatic
Refrigerant	R134a
Insulation thickness(mm)	R/L: 54, B:54

<b>Construction</b>	
External material	Cold rolled steel
Inner material	Stainless steel
Shelves	5 (coated steel wired shelf)
Door lock with key	Yes
Blood basket	5
Access port	1pc. Ø 25 mm
Casters	4 (2 casters with brake) + (2 leveling feet)
Inner door	2
Data logging/Interval/Memory capacity	USB/Record every 10 minutes/1000,000data
Door with heater	Yes
<b>Alarm</b>	
Temperature	High/Low temperature, High ambient temperature
Electrical	Power failure, Low battery
System	Sensor failure, Door ajar, Condenser overheating, Built-in datalogger USB failure, Communication error
<b>Accessory</b>	
Standard	RS485, Remote alarm contact